

Welcome to a
New School Year!



Open House

TWDL Kindergarten
Mrs. Vera & Sra. Acosta

ARRIVAL

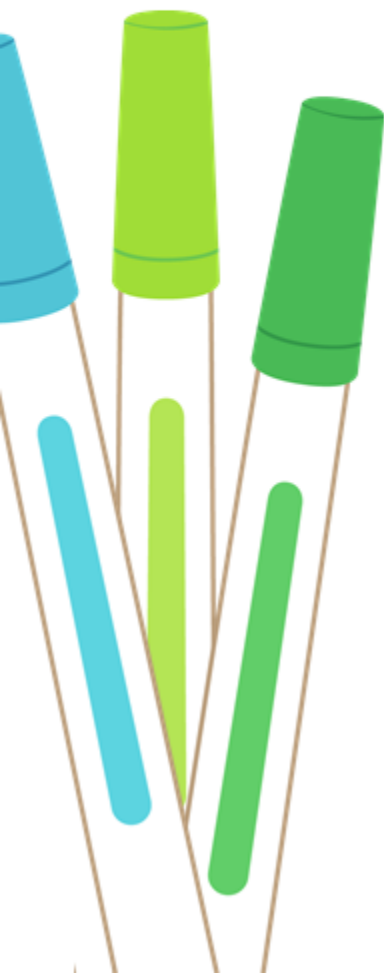
Dismissal



- Student Arrival: 8:15-8:40 am
- Class start: 8:45 am
- Dismissal: Starts at 3:00 pm
- Dismissal on Wednesdays: 2:00 p.m.



OUR Schedule



- 8:45 am - 10:15 am - ELA / SLA
 - Small Group - Grupo pequeño
- 10:30 am - 11:00 am - Lunch
- 11:00 am - 11:15 am - Recess
- 11:15 am - 12:00 pm - Math / Science
- 12:00 pm - 12:45 pm - Specials
- 12:45 pm - 1:15 pm - ELA / SLA
- 1:15 pm - 1:45 pm - ELA (small group)
- 1:45 pm - 2:30 pm - Math / Science
- 2:30 pm - 2:40 pm - Snacks
- 2:40 pm - 3:00 pm -
Intervention/Dismissal

CLASSROOM

Expectations



- **Lunch/ Snack**

We will have lunch daily from **10:30** am – **10:55** am. We will have snack daily at **2:30** pm. Please be sure snacks are easy. Please send utensils for your child if needed.

Soda/Juice – Soda/Juice containers are not permitted in the classrooms (water and water bottles only). *We want to use our time efficiently and this will help greatly.*

NO SNACKS ON WEDNESDAY



- If your child is absent for a few days, please come to school to pick up the assignments for the missing dates.
- Send a note the next day.
- Name, date, grade, reason for absence, and signature!

Attendance POLICY



CLASSROOM Expectations



- Students should bring their binder with the behavior notebook each day.
- Students should bring their orange folder home every Friday and returned back to class **empty** on Monday.
- Students should be turning in their (complete) homework every Friday.
- Students have a 10 minute snack break while working (no snack on Wednesday). Snack should be small, healthy and students should be able to open it independently.



CLASSROOM

Expectations



- All students will start each day on **GREEN** on the Behavior Chart.
- **YELLOW** Reminder: "Tomorrow will be better!"
- **ORANGE** Stop and Think: "I need to make better choices."
- **RED** Note or phone call. "I need to make better choices."
- **BLUE** "OUTSTANDING behavior" "STAR student"

Home work

POLICY

Name _____ Week of September 13th

WEEKLY HOMEWORK

Check off the activities you complete each day.
Return this sheet to school at the end of the week.

MONDAY

Today is English

- Worksheet "Letters or Words?"
- Practice sight words for the month (written in Newsletter)

TUESDAY

Today is Español

- Trazando palabras

WEDNESDAY

Today is English

- Worksheet "Flats 2D/Solids 3D"
- iReady math lessons: teacher assigned

THURSDAY

Today is Español

- Palabras de uso frecuente
- Practice reading a book in Spanish

FRIDAY

- Return Homework.
- Read a books for 20 minutes in both languages



Important: Summative Math Test on 2D/3D shapes will be this Friday.

Science test this week

**Words to Know/
Palabras del saber**

square / cuadrado	circle / círculo
triangle / triángulo	rectangle / rectángulo
oval / óvalo	hexagon / hexágono
Cube / cubo	Sphere / esfera
Cone / cono	Cylinder / cilindro


©2016 Teaching With Love and Laughter

Students will receive their Homework every Monday to be returned on Friday.

You will receive a weekly email from us with a schedule of the homework and resources.

Review daily lesson in both languages and high frequency words in Spanish and sight words in English.

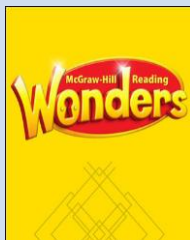
SKYWARD

- 
- All students' grades will be kept in an online grade book called **SKYWARD**.
 - Parents will be able to login and monitor their child's grades and missing assignments.
 - Grades will be posted weekly.
 - Grades will be shown as
 - S: Satisfactory
 - W: Working on
 - N: Needs improvement
 - U: Unsatisfactory and
 - Comments will be given, when needed.

Curriculum

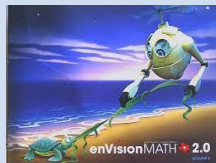
Mrs. Vera

- Reading/ Lectura
 - **Wonders**
- Social Studies/ Estudios Sociales



- Writing/Escritura

- Math/ Matemáticas



Sra. Acosta

- Reading/ Lectura
 - **Maravillas**
- Social Studies/ Estudios Sociales



- Writing/ Escritura

- Science/ Ciencia
- Health/ Salud



Parent Involvement



- Read at home daily
- Help with homework
- Support them in both languages.

Communication

- E-mails work best. We will answer within 24-48 hours.
- Emergencies must be made to the front office.
- Notice of vacations, cruises etc... are greatly appreciated but will be considered as unexcused absences.
- We are here to help. Let's work together and we will succeed.

Conferences



- We are available. Let us know.
- Conference night will be in October.
- We will schedule conferences as soon as an academic concern is identified.

Two-Way Dual Language Goals

Objetivos Programa de Inmersión de Doble vía de Lenguaje



- To create a classroom environment that promotes **linguistic** and **cultural equality** and fosters **positive attitudes** toward others.
- To develop **interpersonal**, **academic content**, and **linguistic competence** in English and Spanish.
- To develop and use **higher level cognitive skills** in Spanish and English.
- To become a **bilingual**, **bi-literate**, and **bicultural** global citizen.

Strategies utilized in the Dual Language Classrooms

Estrategias utilizadas en las aulas de dos idiomas

- Grouped with language buddies / Agrupados con amigos de la lengua
- TPR (Total Physical Response / Respuesta física total)
- Cooperative Learning / Aprendizaje cooperativo
- Think-Pair-Share / Pensar-Par-Compartir
- LEA (Language Experience Approach / Enfoque de experiencia lingüística)
- Bridging / El Puente
- Sentence Prompts / Oraciones de Apoyo

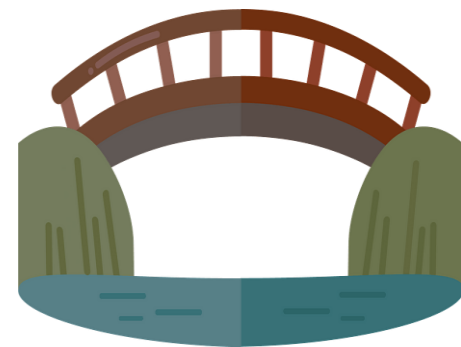
How bridging is accomplished at HCES?

¿Cómo se logra el bridging en HCES?



- It is student-centered
- Students are guided to communicate what they have learned in the other language.
- There is contrastive analysis, during which the students identify structural similarities and differences between the languages.
- A bridge occurs at the end of a unit in Science, Social Studies and Math.
- Students understand that what they learned in one language can be applied to the other.

El Puente



How can I support my child's success in the TWDL program?

¿Cómo puedo apoyar el éxito de mi hijo en el programa Dual?



- **Study with your child at least 30 minutes per night (even if there is no homework)**

Estudie con su hijo al menos 30 minutos por noche (incluso si no hay tarea)



Suggested activities:

- **Label common household items and or practice the Language of the Day to the extent possible.** Etiquete los artículos comunes del hogar y o practique el Idioma del día en la medida que sea posible.



- **Watch with your child, cartoons or appropriate programs on TV that are broadcasted in the second language. Watching movies that they know in their first language with audios in the second language might be beneficial for the second language development.** Vea con su hijo, dibujos animados o programas apropiados en la televisión que se transmiten en el segundo idioma. Ver películas que conocen en su primer idioma con audios en el segundo idioma podría ser beneficioso para el desarrollo del segundo idioma.



- **Play games with your child in which they must use their second language.** Juegue juegos con su hijo en los que debe usar su segundo idioma.

How can I support my child's success in the TWDL program?

¿Cómo puedo apoyar el éxito de mi hijo en el programa Dual?



During your commute from home to school and vice versa, listen to music in the second language. Listen to audiobooks in the second language from the public library, the school library or the electronic resources the school offers for you. Durante su viaje de casa a la escuela y viceversa, escuche música en el segundo idioma. Escuche audiolibros en el segundo idioma de la biblioteca pública, la biblioteca escolar o los recursos electrónicos que la escuela le ofrece.



Collaborate as an audience for your child when practicing speaking, reading aloud, writing or dramatizing in the second language. Colabore como una audiencia para su hijo cuando practique hablar, leer en voz alta, escribir o dramatizar en el segundo idioma.



Participate with your child in the cultural events at school offered by the TWDL Program. Participe con su hijo en los eventos culturales en la escuela ofrecidos por el Programa Dual.

Questions

